

**28<sup>th</sup> International Congress on Project Management**

# **PROJECT MANAGEMENT IN THE DIGITAL DECADE**



**INFO  
PACK**

**HOTEL IZVOR ARANDJELOVAC**  
**16<sup>th</sup> - 18<sup>th</sup> MAY**

**IPMA**®  
SERBIA

international  
project  
management  
association



28<sup>th</sup> International Congress on Project Management

# PROJECT MANAGEMENT IN THE DIGITAL DECADE

## About Congress

The Congress brings together experts from practice and researchers to exchange the contemporary knowledge on innovations and best practices in project management in the digital era. The Congress will provide insights into the latest technological trends and project management strategies in the digital decade, offering participants the opportunity to network with leaders from various sectors and create synergy for future projects. The focus of the Congress will be on the application of agile methodologies, the integration of artificial intelligence in project management, providing participants with a specific understanding of key success factors in contemporary project management.

[Register now](#)



IPMA<sup>®</sup>  
SERBIA

international  
project  
management  
association



# VENUE

## Hotel Izvor

### Arandjelovac



Special price

143 EUR single room, BB

153 EUR double room, BB

If booked via IPMA Serbia with the  
Congress participation fee

## Contact Us

[congress@ipma.rs](mailto:congress@ipma.rs)

[www.ipma.rs](http://www.ipma.rs)

Register now



IPMA<sup>®</sup>  
SERBIA

international  
project  
management  
association



# HOTEL *Kruna*

**Website**

[Hotel Kruna](#)

**Email**

[office@hotelkruna.com](mailto:office@hotelkruna.com)

**Adress:**

[Orasacki put bb Arandjelovac](#)



RESPECT  
*034*

**Booking:** [Respect034](#)

**Adress:** Ljubicka 8, Arandjelovac







# KRISTAL *Apartmani*



## CENTAR *President*

### **Booking**

Centar President

### **Adress:**

Knjaza Milosa 230,  
Arandjelovac

### **Booking**

Kristal apartmani

### **Adresa**

Jadranska 8, Arandjelovac





# APARTMENT *Bukulja*



## **Booking**

[Apartment Bukulja](#)

## **Adress**

Laze Lazarevića 10,  
Arandjelovac



# LUXURY *Center*

**Booking**  
[Luxury Centar](#)

**Adressa**  
Kneza Mihaila 63,  
Arandjelovac





**Booking:**  
Apartman AuRa

### Adresa

Rudjera Boskovic  
15A, Arandjelovac



# APARTMENT *Aura*

# BLAGOJEVIC *Hill*



**Booking:**  
Blagojevic Hill

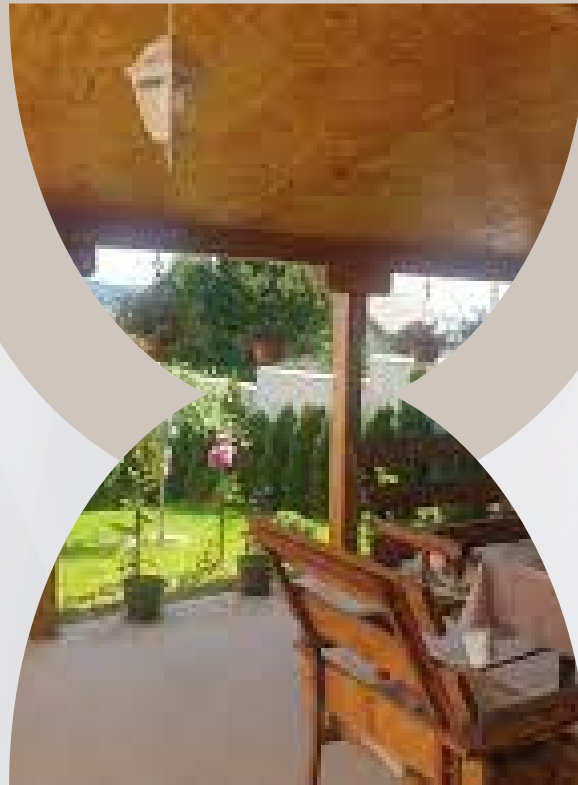
### Adress:

Kraljevica Marka 18,  
Arandjelovac



# PERLA

# Lux



**Booking**  
Perla Lux

**Adress**  
Knjaza Milosa 230,  
Arandjelovac



# PORTO

# Lux

**Booking**  
Porto Lux

**Adress**

Jelene Anzujske 10,  
Arandjelovac

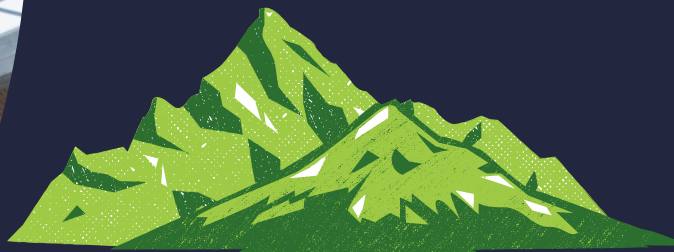




## **NATIONAL MUSEUM**

1 km from the hotel Izvor  
Entrance fee: 1,2e  
Opening hours: 09:00 AM - 05:00 PM

The ticket price is 5e



## **RISOVACA CAVE**

3 km from the hotel Entrance  
fee: 300 RSD Opening hours:  
09:00 AM – 05:00 PM

The ticket price for the  
Risovača and Orašac caves  
is 3e.



## **ORASAC**

5 km from the hotel Izvor  
Entrance fee: 2e.





# PARK BUKOVIČKE BANJE

- 6 km from the hotel Izvor
- Bukulja Mountain - Source of sparkling mineral water Knjaz Miloš
- At the foothill, there is Bukulja Lake.



## Garaško jezero

9 km away from the hotel Izvor

It is located at an altitude of 400 meters and was established in 1976. It is situated in the heart of Šumadija.

## VINARIJA TARPOS

5 km from the hotel Izvor

Reservation required

Sunday–Thursday: 12:00 PM – 11:00 PM

Friday and Saturday: 12:00 PM – 12:00 AM





# TOPOLA AND OPLENAC

15 km from the hotel Izvor  
Oplenac is a hill near Topola

## CHURCH SAINT DJORDJA

15km from the hotel Izvor



# KRALJEVA VINARIJA

20 km from the hotel Izvor  
Grapes and wine still  
represent the symbol of every  
village in this area.

## WINERY ALEKSANDROVIC

17 km from the hotel Izvor  
Reservation required Weekdays  
and Saturdays: 08:00 AM - 7:00 PM  
Sundays: 10:00 AM - 6:00 PM



# EQUESTRIAN CLUB ARANDJELOVAC

# ETHNO VILLAGE BRESTOVI

# ADDITIONAL INFORMATION

1.5 km from the hotel Izvor  
1 hour: 20e  
1 hour for two persons: 40e

2 km from the hotel Izvor  
View overlooking half of  
Sumadija and Serbia Restaurant  
with a view

**Exchange rate: 1 EUR =  
approximately 117 RSD**  
**Bus ticket price from  
Belgrade to Arandjelovac:  
650-730 RSD, with a  
duration of approximately  
1 hour and 30 minutes.**  
**Average temperature in  
May: 25°C.**

**Taxi numbers:**

**+38164/4833-010**

**+381800-200-203**

**+38165/97-12-712**

**+38163/17-12-712**

**+38160/71-26-712**

**+38163/663-893**

**+38165-5299715**

